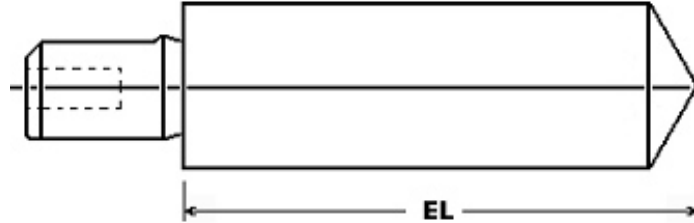


Custom Rockwell-Scale Diamond Indenters

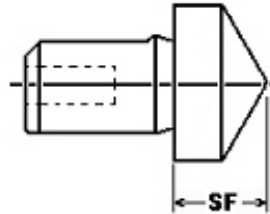
for most models of Newage Indentron®, ME-2®
as well as other brands of Rockwell Hardness Testing Systems.

Standard Configuration Indenter, Extended Length NI-SP9-EL



Extended Length from 0.75" up to 3" Use at any Rockwell load: 15-150 kg
PLEASE SPECIFY LENGTH

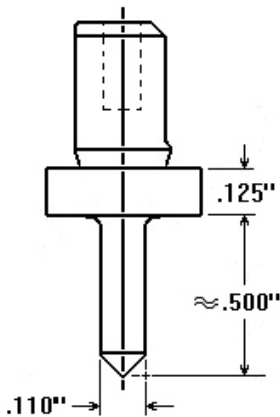
Standard Configuration Indenter, Short Form NI-SP9-SF



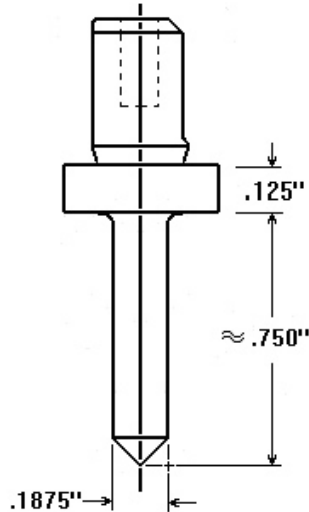
Shortened Length from 0.156" up to 0.375" Use at any Rockwell load: 15-150 kg
PLEASE SPECIFY LENGTH

Slim Body Indenter

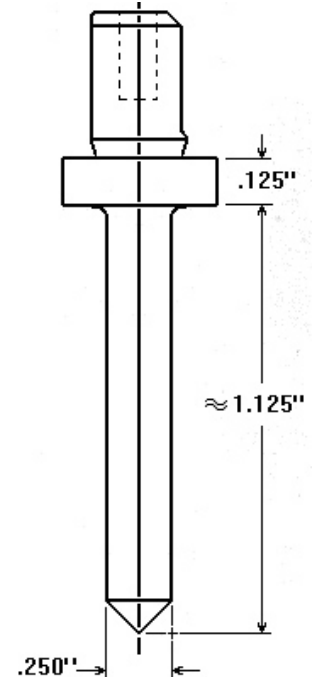
NI-SP9-SBA
SLIM BODY, Style SBA
Use at Rockwell loads: 15-45 kg



NI-SP9-SBB
SLIM BODY, Style SBB
Use at Rockwell loads: 15-150 kg



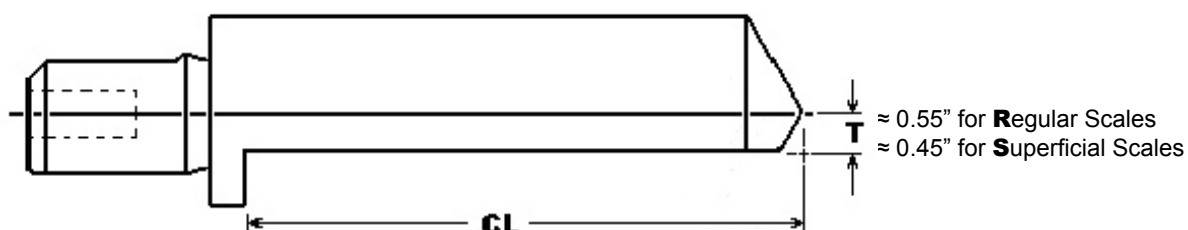
NI-SP9-SBC
SLIM BODY, Style SBC
Use at Rockwell loads: 15-150 kg



Single Cutaway Indenters

NI-SP9-CLRA (Regular), NI-SP9-CLSA (Superficial)

NI-SP9-CLRB (Regular), NI-SP9-CLSB (Superficial)



$\approx 0.55''$ for **Regular Scales**
 $\approx 0.45''$ for **Superficial Scales**

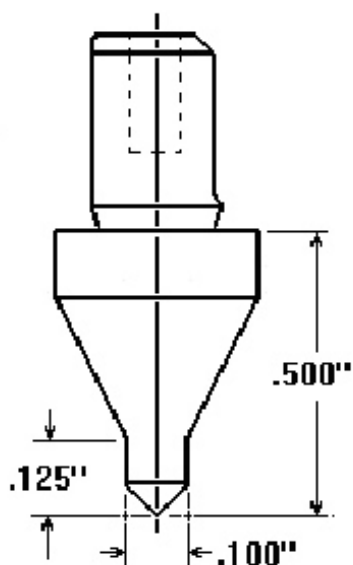
Cutway Length (CL) from 0.5" up to 3", Offset 0.55" or 0.44",
 Use "CLR" for 0.55 at any Rockwell load: **15-150 kg**, "CLS" for 0.45 at any Superficial load: **15-45 kg**
 Use "A" for lengths **less than 1.5"**, Use "B" for lengths of **1.5" or more**
PLEASE SPECIFY LENGTH

Double Taper Indenters

NI-SP9-DTA

Double Taper, Style A

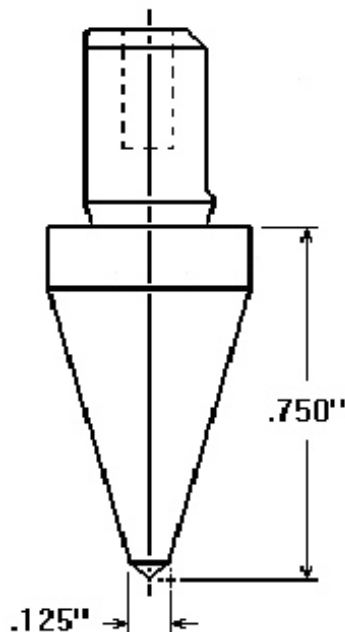
Use at any Rockwell load: **15-150 kg**



NI-SP9-DTB

Double Taper, Style B

Use at any Rockwell load: **15-150 kg**



All special configuration diamond indenters are made to order so dimensions provided are "typical" and can be modified to better suit your application. Above diagrams are not to scale and are provided for reference only. Contact Newage Testing Instruments for price and delivery on any diamond item. When calling please provide your hardness tester's make and model along with information about your application including the hardness scale you will use and the type of diamond you will need. Note: the mounting support for these diamonds is limited and they are easily broken. Specifications may change.

® REGISTERED TRADEMARK OF NEWAGE TESTING INSTRUMENTS

NEWAGE
 Testing Instruments, Inc.

147 James Way, Southampton PA 18966, USA; Tel: 215-526-2200; Fax 215-526-2192
 info@newage1.com www.hardnesstesters.com